



# Enterprise Information Systems Project

An Overview Briefing



# Goal of the Assessment Project

*Conduct an assessment to support the University's efforts to replace its mission-critical enterprise administrative information systems with an environment that achieves sustainable operational effectiveness and efficiencies in business processes.*



# Benefits of a Modern Enterprise Administrative System

- ◆ Move to a sustainable and extensible technology infrastructure to support LSU business needs today and well into the future
- ◆ Integration of data and systems across institutional entities so that each LSU business unit will have the information they need, when they need it, with far less complexity
- ◆ Streamlined business processes to enable LSU staff, students, and faculty, to work more effectively and successfully
- ◆ Data analysis capabilities to help LSU better compete in recruiting and retaining faculty, staff, and students
- ◆ Improved access to data for reporting , analysis, and strategic planning decisions
- ◆ Adoption of industry standards and best practices for the current and future information technology architecture

# What is an ERP?

*An ERP is an Enterprise Resource Planning system. A system that processes institution-wide transactions in a fully integrated technology platform.*

*These multi-functional systems are designed to streamline almost every aspect of how institutions operate. Simply put, an ERP integrates institutional data and processes through one system.*

# ERP Solution Components

## Core Components

Common

Student

Financials

Human Resources/  
Payroll

Institutional  
Advancement

## Secondary Components

Portal

Constituent  
Relationship  
Management (CRM)

Data Warehouse

Electronic Document  
Management

Facilities/Room  
Scheduling

Electronic Workflow

## Integrated/Interfaced Components

Bookstore

Dining Services

Housing/Residence Life

Facilities  
Management/Physical Plant

Learning Management  
System

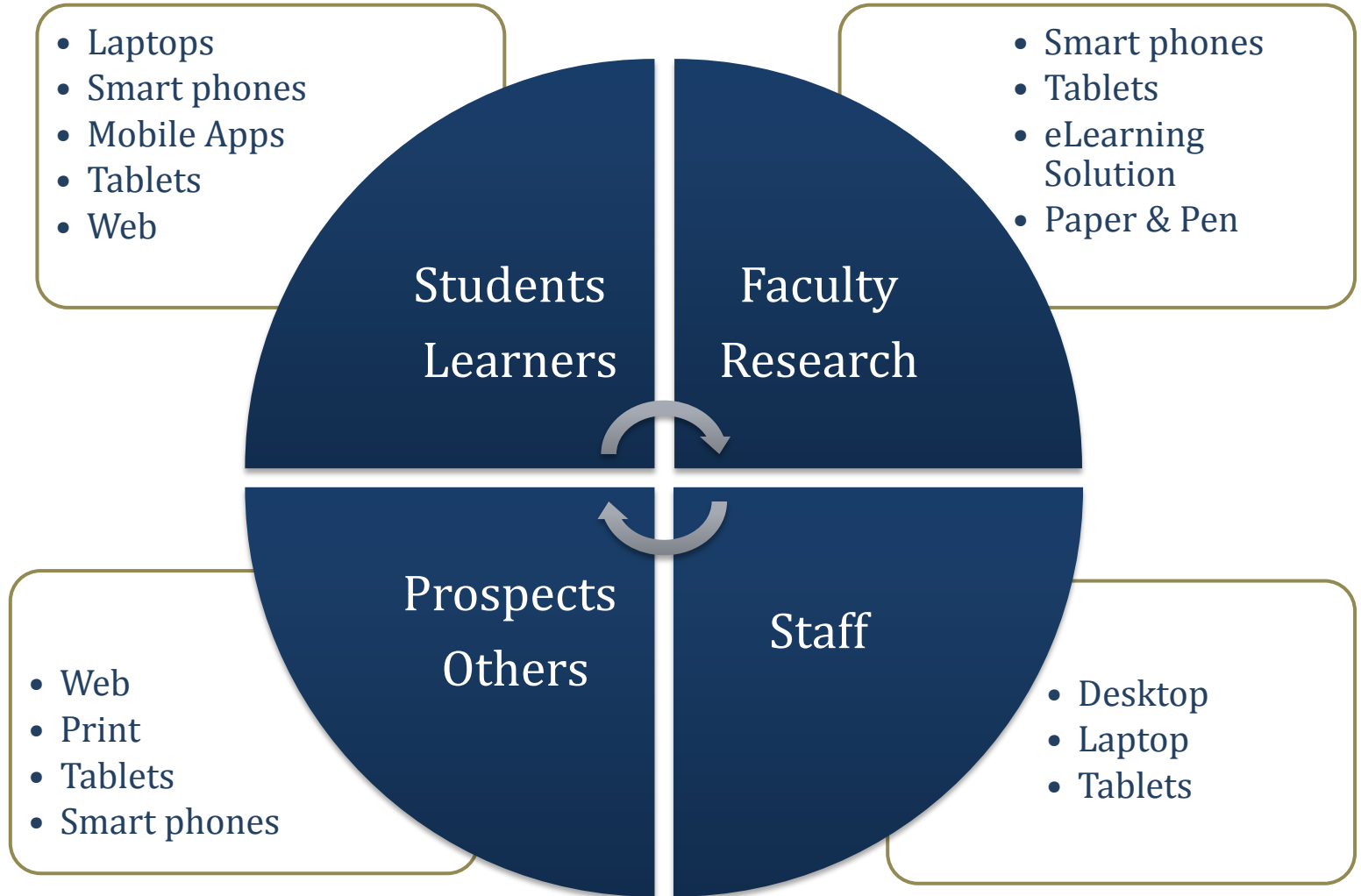
ID Card Management

Library

Health Center

Safety/Parking

# Comprehensive Constituent Service Offerings



# System Options



## Commercial Higher Ed ERP System

- Mature product
- Code maintained by vendor
- Large install base
- Delivered integration



## Software Developed System

- Built for LSU business process needs
- Specialized integration development
- Updates, compliance, and maintenance are done by LSU



## Open/Community Source

- Collaborative voice in development
- No cost to download, install, and modify
- LSU takes sole ownership for updates and maintenance

# What are the Possibilities for LSU?



ORACLE®

**kuali**  
foundation

**SUNGARD** HIGHER EDUCATION

sciQuest.



medicat.

ASTRA SCHEDULE

**MOODLE**  
COURSE MANAGEMENT SYSTEM



hobsons 



Enterprise Information Systems Project:

**CONSULTANT PARTNER**

# Collegiate Project Services (CPS)

- ◆ *Who They Are.* A professional project management firm in our 23rd year of serving our clients
- ◆ *Their Skill Sets.* Two core competencies – *project management* and *organizational development*
- ◆ *Their Qualifications.* CPS project managers are credentialed professionals, experienced in Higher Ed, and experienced in managing complex projects for higher education institutions
- ◆ *Their Clients.* More than 130 institutions across the country
- ◆ *Their Independence.* As a project management firm that represents the interests of the institution – we do not sell software or technical or functional consulting – *we have no conflict of interest* when advising and managing our client's complex technology projects.

# CPS Experience with Comparable Institutions & Projects

Ball State University

Clemson University

Lewis University

Medical University of South  
Carolina

Mercer University

Rutgers University

University of Arkansas  
Monticello

University of Georgia

University of Maine System

University of Nebraska

University of Pittsburgh

University of Puget Sound

University of South Carolina

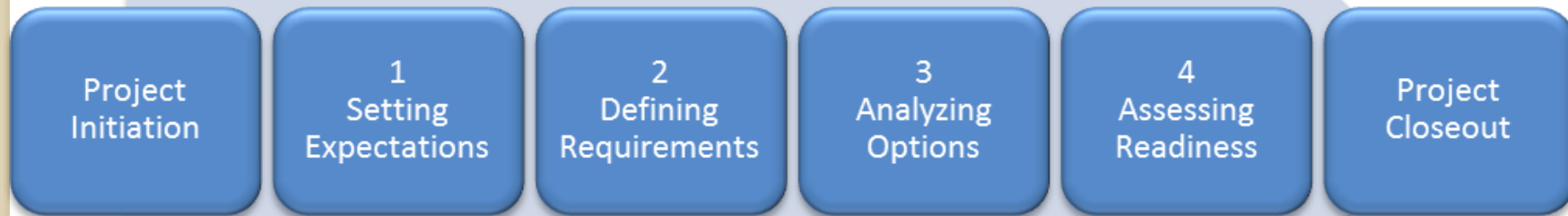
University of Tennessee

Virginia Tech

Washington State Board of  
Community and Technical  
Colleges

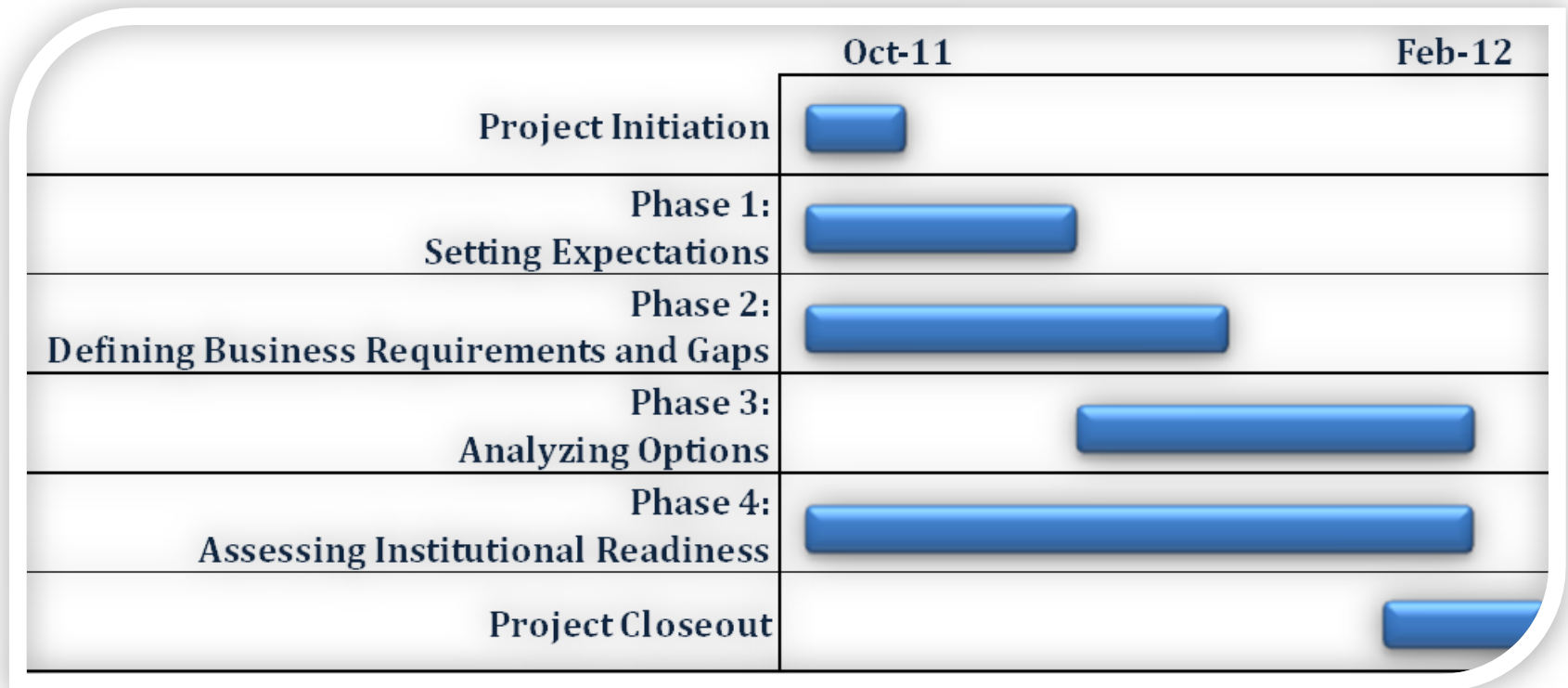
Enterprise Information Systems Project:

**WORK CURRENTLY IN PROGRESS**

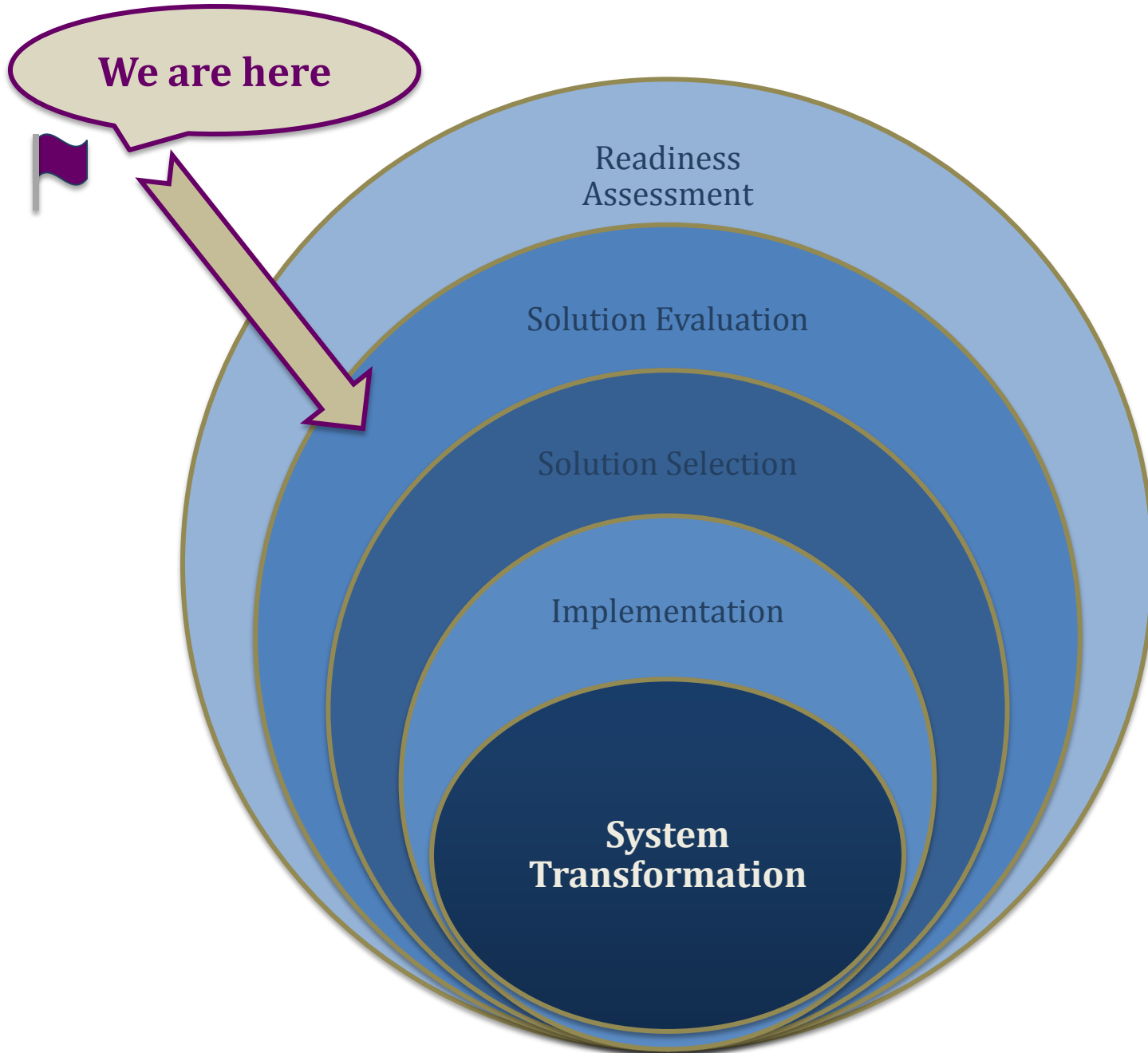


- *Conduct project orientation sessions with LSU stakeholders*
- *Bring 3 commercial system vendors to campus to conduct high level system overviews for LSU stakeholders*
- *Engage an open source vendor to present a system overview for LSU stakeholders*
- *Collect LSU stakeholder input on user requirements using DecisionDirector*
- *Conduct selected focus group and individual interviews with LSU stakeholders to gather data to assess LSU institutional readiness*
- *Collect cost estimates from suppliers for procurement and deployment*
- *Gather information on possible implementation options and sequence*
- *Present final, detailed study report of all tasks and services completed under this project with summary recommendations*

# Current Assessment Project Timeline



# Steps to System Transformation Success





**Questions,  
Comments, or  
Concerns?**