

# FOSSIL HUNT

By: Mignon Morgan  
(Edited by: Adrienne Steele)



## Objectives

Teachers will use a fossil gravels kit (see references) to help students sort through a mixture of small gravel to select pieces that might be fossils. Students will examine their fossil findings with a hand lens, a SOAR, and/or a stereomicroscope. They will then try to identify their fossils using the guidelines included in the kit.

## Materials

- Scope-On-A-Rope with stand and television/projector
- fossil kit containing a gravel sample
- hand lenses
- Petri dishes (or other small transparent dishes)
- forceps
- double-stick tape
- chart of fossils
- gray card or piece of construction paper for each pair of students



## LA State Standards

- SI-E-A4, ESS-E-A7
- Grade Level: 4th-8th
- Subject Areas: Science As Inquiry, Earth Science

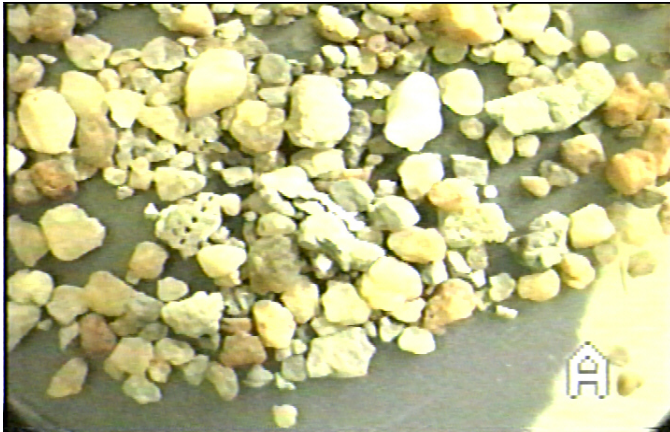
## Procedure

1. Teacher gives each pair of students about 1 TBSP of gravel sample in a Petri dish.
2. Students shake the dish in order to arrange the gravel in a single layer.
3. Students look at their sample carefully with a hand lens to select possible fossils. They remove any possible fossils from the sample with the forceps and place them on the card. Use double stick tape to hold the fossils on the card and to keep them from rolling off the desk.
4. Students examine their fossil cards with the hand lens and use the chart to aid in identification.
5. Student pairs take turns using the SOAR to look at their most interesting finds. Place the SOAR in its stand and use the 30x lens for the best results. The lens tip may be removed so that the students' cards may be easily moved around under the scope. Press the ON button to determine the best lighting (polarized or reflected) for the samples.

This work is supported in part by a grant to Louisiana State University from the Howard Hughes Medical Institute through the Precollege and Undergraduate Science Education Program.

LSU-HHMI Scope-On-A-Rope Program, 225-578-3080, [soar@lsu.edu](mailto:soar@lsu.edu), [www.scopeonarope.lsu.edu](http://www.scopeonarope.lsu.edu)

## Pictures



Gravel sample (1X Stand and View)



Selecting the fossil (1X Stand and View)



Selected fossil (30X Stand and View)



Selected fossil (50x lens was used)



Crinoid--a sea lily (30X Stand and View)



Crinoid stem section (30 X Stand and View)

## References

1. You can borrow a fossil gravel kit from Adrienne Steele, LSU SOAR Program Coordinator, [soar@lsu.edu](mailto:soar@lsu.edu), 225-578-3080.
2. Purchase your own kit. A Google search for "fossil hunt kit" gives several options, such as:
  - a. Fisher Scientific, [www.fishersci.com](http://www.fishersci.com)
  - b. Nasco, [www.enasco.com](http://www.enasco.com)
  - c. Carolina Biological Supply, [www.carolina.com](http://www.carolina.com)

This work is supported in part by a grant to Louisiana State University from the Howard Hughes Medical Institute through the Precollege and Undergraduate Science Education Program.

LSU-HHMI Scope-On-A-Rope Program, 225-578-3080, [soar@lsu.edu](mailto:soar@lsu.edu), [www.scopeonarope.lsu.edu](http://www.scopeonarope.lsu.edu)